

SOUTHERN *CRANES & ACCESS*

SOUTHERN *CONTRACT LIFTING*

MANITOU MT 932

ROUGH TERRAIN
FORKLIFT TRUCK



WEST SUSSEX DEPOT

TEL: 01798 875988

FAX: 01798 875989

sales@southerncranes.co.uk

www.southerncranes.co.uk

LONDON DEPOT

TEL: 0208 683 1188

FAX: 0208 683 1199

southernlifting@tiscali.co.uk

MT 932

Lifting Capacity - 3200kg

at 500mm from forks heels.

- Tipping load at maximum reach: 673kg
- Tear out force with toothed digging bucket to ISO 8313 7400daN

Lifting Height - 9.00m

Times: unladen / loaded (in s)

- Lifting 6.7/7.3
- Lowering 5/4.7
- Simultaneous extension 1st and 2nd booms 12.2/13.3
- Simultaneous retraction 1st and 2nd booms 8/7.6
- Time unladen (in s)
- Crowd 2.8
- Dump 2.3

Tyres

- 14.9 - 24 18PR

Forks

- Length 1200
- Width x thickness 125 x 45
- Maximum distance between forks 1040
- Carriage rotation 126°

Multidisc brakes - hydraulically on 4 wheels

PERKINS Engine

- Type 1004.42
- Capacity 4 cylinders - 4233cm³
- Power (ISO/TR 14396) 81HP / 60kw at 2200rpm Turbo 104HP / 76.5kw
- Maximum torque 290Nm at 1400rpm
- Direct injection
- Water cooling

Transmission - Torque convertor

- Electro-hydraulic reversing shift
- 4 speed forward and reverse
- Maximum travel speed 25km/h

Hydraulics

- Lifting/tilting pump gear type 260bars / 105 l/mn
- Flow divider with priority to steering and brakes

Capacities

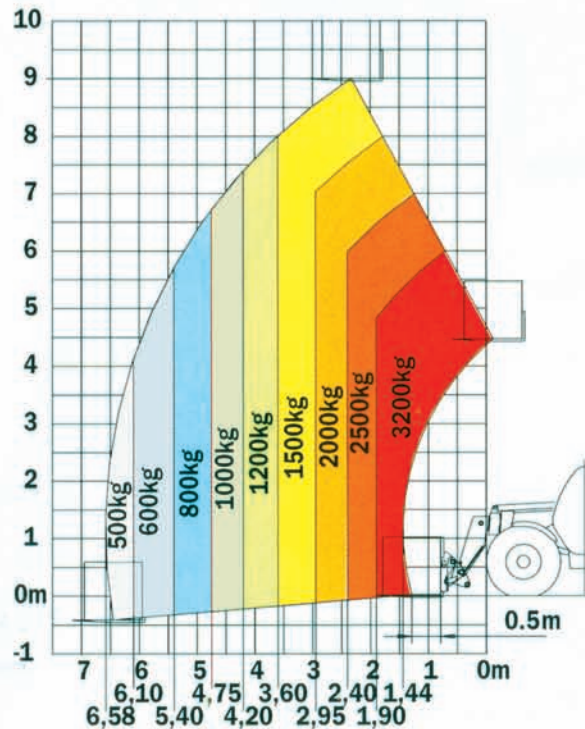
- Cooling system 24.5 l.
- Engine oil 10.5 l.
- Hydraulic oil 125 l.
- Transmission oil 16 l.
- Fuel tank 120 l.

Measurements

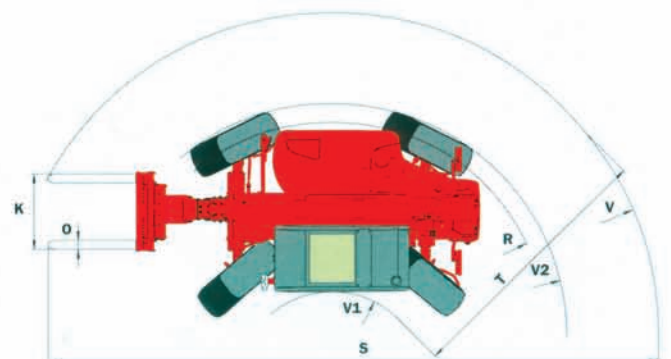
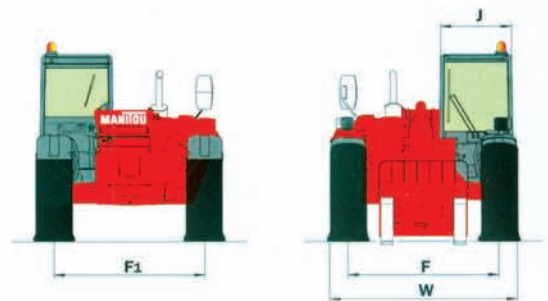
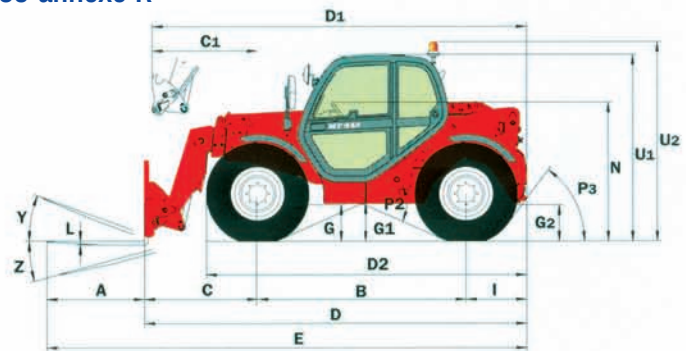
- Weight unladen (with forks) 7640kg
- Overall width 2.26m
- Overall height 2.30m
- Turning radius (outside wheels) 3.68m
- Overall length 4.71m
- Ground clearance 0.44m
- Drawbar pull 6800daN

RANGE OF MOTION

Reach at maximum height 2.3m



Under prEN 1459 annexe R



A	1200
B	2560
C	1393
C1	1491
D	4713
D1	4811
D2	3905
E	5913
F	1846
F1	1846
G	460
G1	440
G2	445
I	760
J	865
K	1040
L	45
N	1690
O	125
P2	47.5°
P3	53°
R	3475
S	7548
T	4185
U1	2300
U2	2550
V	4770
V1	1205
V2	3675
W	2261
Y	11,9°
Z	113,7°