

SOUTHERN *CRANES & ACCESS*

SOUTHERN *CONTRACT LIFTING*



GENIE 34/22

SELF PROPELLED
ARTICULATED BOOM



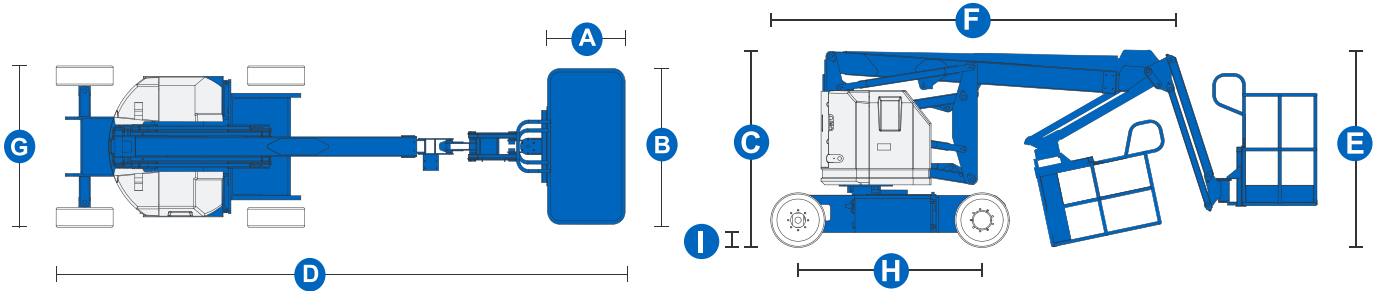
WEST SUSSEX DEPOT
TEL: 01798 875988
FAX: 01798 875989
sales@southerncranes.co.uk

www.southerncranes.co.uk

LONDON DEPOT
TEL: 0208 6831188
FAX: 0208 683 1199
southernlifting@tiscali.co.uk

GENIE 34/22

SELF PROPELLED ARTICULATED BOOM



WORKING RANGE

2WD - Working height max*	12.52 m
2WD - Platform height max	10.52 m
4WD - Working height max*	12.62 m
4WD - Platform height max	10.62 m
Horizontal reach max	6.78 m
Up'n'over clearance	4.54 m

MEASUREMENTS

Platform length (A)	0.76 m
Platform width (B)	1.42 m
Height - stowed (C)	2.00 m
Length - stowed (D)	5.72 m
Storage height (E)	2.26 m
Storage length (F)	4.19 m
Width (G)	1.80 m
Wheelbase (H)	1.88 m
Ground clearance (I)	0.14 m

PRODUCTIVITY

Lift capacity	227 kg
Platform rotation	180°
Vertical jib rotation	144°
Turntable rotation	355° non-continuous
Turntable tail swing	zero
Drive speed - stowed	6.4 km/h
Drive speed - raised **	1.0 km/h
Gradeability ***	35%
Turning radius - inside	2.13 m
Turning radius - outside	4.08 m
Controls	proportional
Tyres	0.56 x 0.18 x 0.45 m
Auxiliary power unit	12V DC
Hydraulic tank capacity	15.1 litres
Weight ****	5,171 kg

Genie's engine-powered articulating Z booms provide the ultimate in lifting versatility, with up, out and over positioning capabilities. Many options are available, including two and four-wheel drive, a rough terrain package and multiple power options.

FEATURES

- 4ft (1.22m) jib with 144° working range
- Self-levelling platform
- Hydraulic platform rotation
- Fully proportional controls
- AC power to platform
- Horn
- Hour meter
- Tilt alarm
- 355° non-continuous turntable rotation
- Zero tail swing and front arm swing
- Two speed wheel motors
- Locking turntable covers
- All engines are emissions compliant
- Engine protection package
- 12V DC auxiliary power

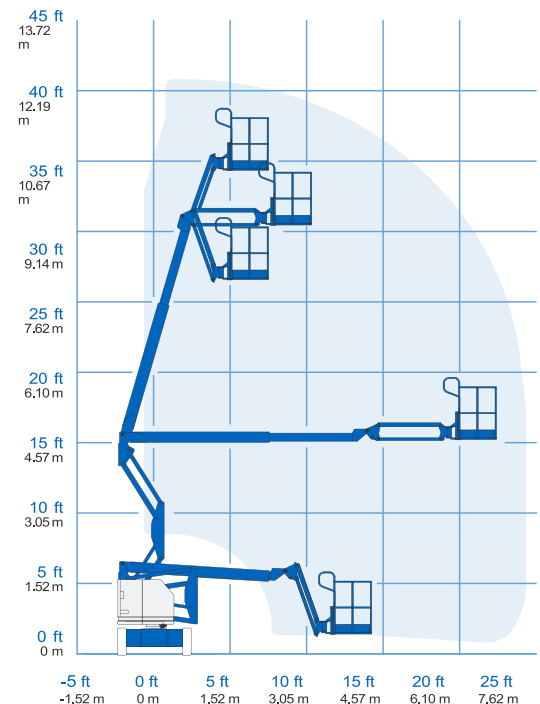
* The working height adds 2 metres to platform height.

** In the lift mode (platform raised), the machine is designed to operate on firm, level surfaces only

*** Gradeability applies to driving on slopes. See operators manual for details regarding slope ratings

**** Weight will vary depending on options and/or country standards

RANGE OF MOTION



WINTERFIELDS FARM, WIGGONHOLT, PULBOROUGH
 WEST SUSSEX RH20 2EJ
www.southerncranes.co.uk