

**SOUTHERN CRANES & ACCESS**

**SOUTHERN CONTRACT LIFTING**

# MANITOU 17MT TELEHANDLER



**WEST SUSSEX DEPOT**  
TEL: 01798 875988  
FAX: 01798 875989  
sales@southerncranes.co.uk

[www.southerncranes.co.uk](http://www.southerncranes.co.uk)

**LONDON DEPOT**  
TEL: 0208 683 1188  
FAX: 0208 683 1199  
southernlifting@tiscali.co.uk

# MANITOU TELEHANDLER 17M

**Lifting Capacity - 4000kg**

at 500mm from forks heels.

- Tipping load at maximum reach: with stabilisers **1113kg**
- Tear out force with bucket to ISO 8313 **7000daN**

**Lifting Height - 16.65m**

**Times:** unladen / loaded (in s)

- Lifting **15/16**
- Lowering **10.9**
- Extension 1st and 2nd booms **21.8/24.4**
- Extension 3rd boom (with stabilisers only) **10.4/11.5**
- Retraction 1st and 2nd booms **17.7/17.4**
- Time unladen (in s)
- Crowd **5.3**
- Dump **8.4**

## Forks (mm)

- Length **1200**
- Width x thickness **125 x 50**
- Maximum distance between forks **1040**
- Carriage rotation **124°**

**Multidisc brakes - hydraulically assisted on both axles**

## PERKINS Engine Turbo

- Type **1004C - 44 Turbo**
- Capacity **4 cylinders - 4400cm<sup>3</sup>**
- Power (ISO/TR 14396) at 2200rpm Turbo **100HP / 74.5kw**
- Maximum torque **412Nm at 1400rpm**
- Direct injection
- Water cooling

**Transmission - Torque convertor**

- Electro-hydraulic reversing shift
- 4 speed forward and reverse
- Maximum travel speed **25km/h**

## Hydraulics

- Gear type **260bars / 196 l/mn**
- Flow divider with priority to steering and brakes

## Capacities

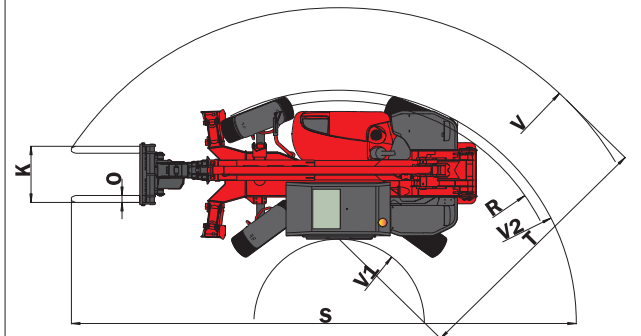
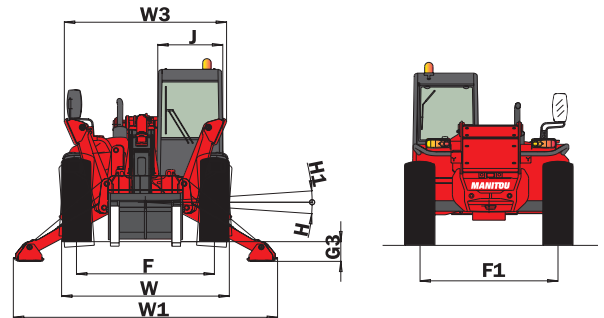
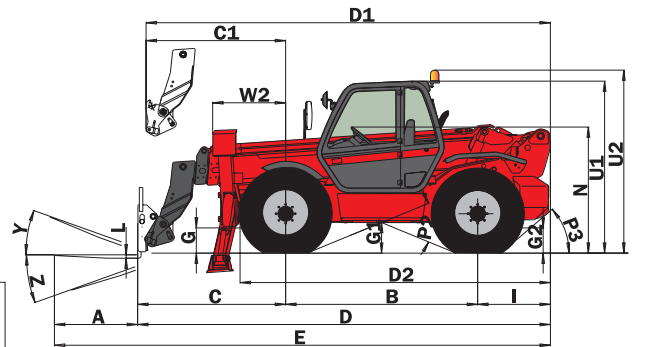
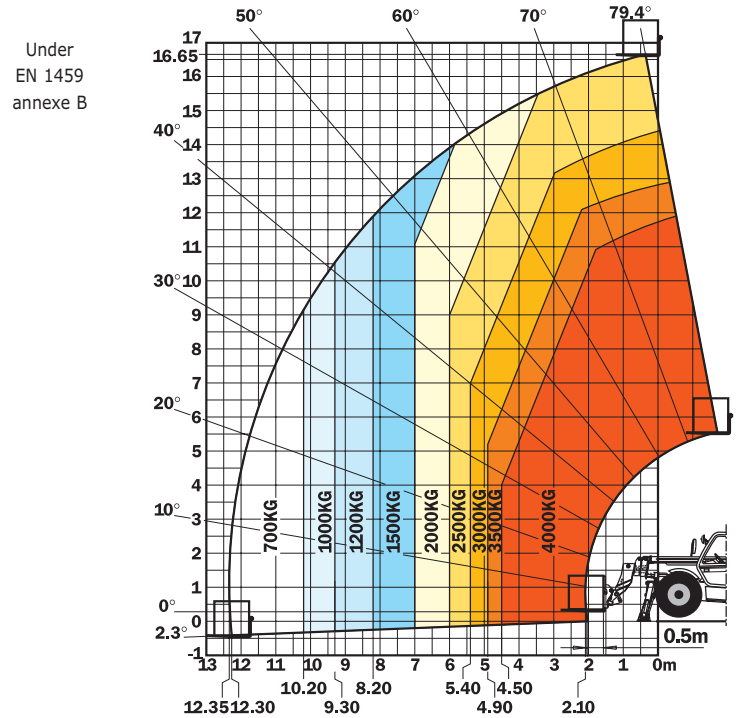
- Cooling system **18.5 l.)**
- Engine oil **11 l.)**
- Hydraulic oil **175 l.**
- Transmission oil **16 l.**
- Fuel tank **135 l.**

## Measurements

- Weight unladen (with forks) **11220 kg**
- Overall width **2.42m**
- Overall height **2.60m**
- Turning radius (outside wheels) **4.17m**
- Overall length **5.98m**
- Ground clearance **0.48m**
- Drawbar pull (unladen) **9700 daN**

# RANGE OF MOTION

**Reach at maximum height 1.88m**



A	1200
B	2770
C	2160
C1	2232
D	5980
D1	6052
D2	4435
E	7180
F	1990
F1	1990
G	480
G1	475
G2	480
G3	290
H	7°
H1	7°
I	1050
J	950
K	1040
L	50
N	1880
O	125
P2	45,5°
P3	50°
R	3950
S	8912
T	4239
U1	2605
U2	2785
V	5709
V1	1470
V2	4168
W	2425
W1	3820
W2	1050
W3	2350
Y	12°
Z	112°

mm