

SOUTHERN *CRANES & ACCESS*

SOUTHERN *CONTRACT LIFTING*

S-60 / S-65
SELF PROPELLED
TELESCOPIC BOOM



WEST SUSSEX DEPOT

TEL: 01798 875988

FAX: 01798 875989

sales@southerncranes.co.uk

www.southerncranes.co.uk

LONDON DEPOT

TEL: 0208 683 1188

FAX: 0208 683 1199

southernlifting@tiscali.co.uk

STANDARD FEATURES

- S-60 has 20.3m (66ft) working height
- S-65 has 21.9m (71ft) working height
- S-60 has 15.3m (50ft 4in) horizontal reach
- S-65 has 16.8m (55ft 3in) horizontal reach
- Up to 227kg (500lb) lift capacity
- Full-time active oscillating axle
- Tier II emission capable engine
- Dual fuel (Petrol/LPG) or diesel engine options
- Hall effect joystick controllers
- Fully proportional joystick controls with ramp up/down feature
- Hydraulic platform rotation
- 360° continuous turntable rotation
- 12V DC auxiliary power
- Fuel select switch on platform and ground control panels (Petrol/LPG models)
- Closed-loop hydrostatic drive
- Positive traction drive
- Drive enable system
- Self-levelling platform
- Low profile, low pressure tyres
- Locking turntable covers
- Anti-restart engine protection
- Foot switch time out
- Auto engine fault shut down
- AC wiring to platform
- Wire braided hose
- Tilt alarm
- Horn
- Hour meter

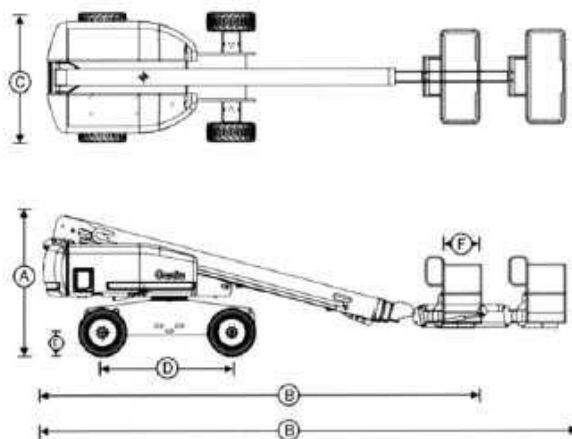
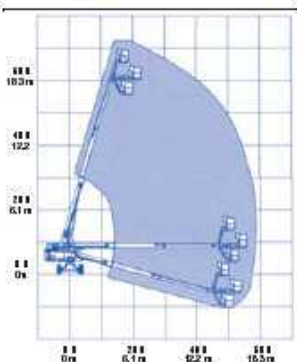
OPTIONS AND ACCESSORIES

- Alarm package
- Cold start packages
- 2500 or 3000 watt AC generator
- Belt driven generator
- 2.44m (8ft) steel platform
- 340kg (750lb) lift capacity option on the S-60
- Platform swing gate
- Air line to platform
- Platform rail pinch guard
- Platform work lights
- Lockable platform control box cover
- Second 12V battery
- Foam-filled, non-making and floatation tyre packages
- Tool tray
- Fluorescent tube caddy
- Hostile environment packages
- Hydraulic oil cooler
- LPG tank
- GS/LPS rating for GM engine powered machines
- Driving lights
- Pipe cradle
- Weld cables
- On-board weld package
- Diesel scrubber

STANDARD COMPLIANCE

CE EN280

RANGE OF MOTION



SPECIFICATIONS

Model	S-60	US	S-65	US
Working height max*	20.3m	66ft 2in	21.9m	71ft 4in
Platform height max	18.3m	60ft 2in	19.9m	65ft 4in
(A) Height - stowed	2.69m	8ft 10in	2.69m	8ft 10in
(B) Length - stowed	8.33m	27ft 4in	9.45m	31ft
(C) Width	2.49m	8ft 2in	2.49m	8ft 2in
(D) Wheelbase	2.74m	9ft	2.74m	9ft
(E) Ground clearance	30cm	12ft	30cm	12in
(F) Platform length:	76cm	6ft 30in	76cm	30in
	91cm	8ft 36in	91cm	36in
(G) Platform width:	1.83m	6ft 72in	1.83m	72in
	2.44m	8ft 96in	2.44m	96in
Horizontal reach max	15.3m	50ft 4in	16.8m	55ft 3in
Maximum lift capacity	227kg	500lb	227kg	500lb
6ft platform				
Maximum lift capacity	227kg	500lb	227kg	500lb
8ft platform				
Turntable radius - outside	5.66m	18ft 7in	5.66m	18ft 7in
Turntable radius - inside	2.39m	7ft 10in	2.39m	7ft 10in
Turntable rotation	360° continuous		360° continuous	
Turntable tailswing	1.19m	3ft 11in	1.19m	3ft 11in
Power source	GM 3.0L 80hp (59kw), Duel Fuel Deutz Diesel F3L 2011F 49hp (36kw) Perkins Diesel 404-22 50hp (46kw)			
Controls	ALC 500		ALC 500	
Platform rotation	160°		160°	
Tyres	15 - 19.5 NHS		15 - 19.5 NHS	
Hydraulic tank capacity	170.3 litre	45gal	170.3 litre	45gal
Fuel tank capacity	151.4 litre	40gal	151.4 litre	40gal
Weight**	9,525kg	21,000lb	10,069kg	22,200lb
Drive speed - stowed 2WD	7.1km/h	4.4mph	7.2km/h	4.5mph
Drive speed - stowed 4WD	6.0km/h	3.7mph	5.6km/h	3.5mph
Drive speed - extended				
(all models)	1.0km/h	0.6mph	1.0km/h	0.6mph
Gradeability*** - stowed				
	2WD	30%	30%	
	4WD	45%	45%	

* The metric equivalent of working height adds 2 m to platform height. Imperial adds 6 ft to platform height

** Weight will vary depending on options and/or country standards

*** (Gradeability is theoretical, traction-dependent)