

SOUTHERN CRANES & ACCESS

SOUTHERN CONTRACT LIFTING

THE GENIE S-85

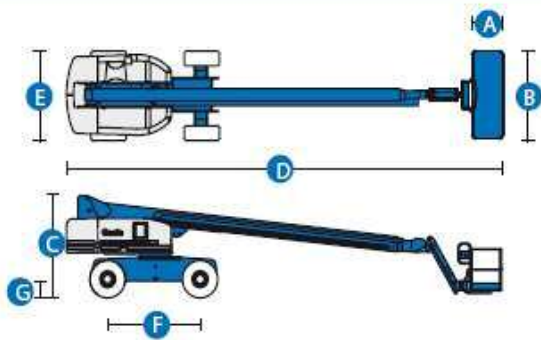


WEST SUSSEX DEPOT
TEL: 01798 875988
FAX: 01798 875989
sales@southerncranes.co.uk

www.southerncranes.co.uk

LONDON DEPOT
TEL: 0208 683 1188
FAX: 0208 683 1199
southernlifting@tiscali.co.uk

THE GENIE S-85



MEASUREMENTS	S™-85	
	US	Metric

Working height maximum*	91 ft	27.90 m
Platform height maximum	85 ft	25.90 m
Horizontal reach maximum	77 ft 5 in	23.60 m
Below ground reach	13 ft 9 in	4.19 m
A Platform length - 6 ft model	2 ft 6 in	.76 m
Platform length - 8 ft model	3 ft	.91 m
B Platform width - 6 ft model	6 ft	1.83 m
Platform width - 8 ft model	8 ft	2.44 m
C Height - stowed	9 ft 2 in	2.80 m
D Length - stowed	40 ft 7 in	12.37 m
Length - transport (jib tucked under)	35 ft	10.67 m
E Width - axles retracted	8 ft	2.44 m
Width - axles extended	10 ft 1 in	3.07 m
F Wheelbase	9 ft	2.74 m
G Ground clearance - center	1 ft 5 in	.43 m

PRODUCTIVITY

Lift capacity - 6 ft platform	500 lbs	227 kg
Lift capacity - 8 ft platform	500 lbs	227 kg
Platform rotation	160°	
Turntable rotation	360° continuous	
Turntable tailswing - axle retracted	4 ft 8 in	1.42 m
Turntable tailswing - axle extended	3 ft 8 in	1.12 m
Drive speed - stowed	3.5 mph	5.6 km/h
Drive speed - raised/extended	0.68 mph	1.1 km/h
Gradeability - 2WD - stowed**	30%	
Gradeability - 4WD - stowed**	45%	
Turning radius - axle extended: inside	10 ft 8 in	3.25 m
outside	23 ft	7.01 m
Controls	12 V DC proportional	
Tires - RT lug	385/65 D22.5	

* The metric equivalent of working height adds 2 m to platform height. U.S. adds 6 ft to platform height.
 ** Gradeability applies to driving on slopes. See operator's manual for details regarding slope ratings.
 *** Weight will vary depending on options and/or country standards.

POWER

Power source	Deutz BF4L 2011 4 cylinder diesel 78 hp (58.1 kW) Perkins 804C-33 4 cylinder diesel 63 hp (50 kW)	
Auxiliary power unit	12 V DC	
Hydraulic tank capacity	45 gal	170 L
Fuel tank capacity	33 gal	125 L

WEIGHT***

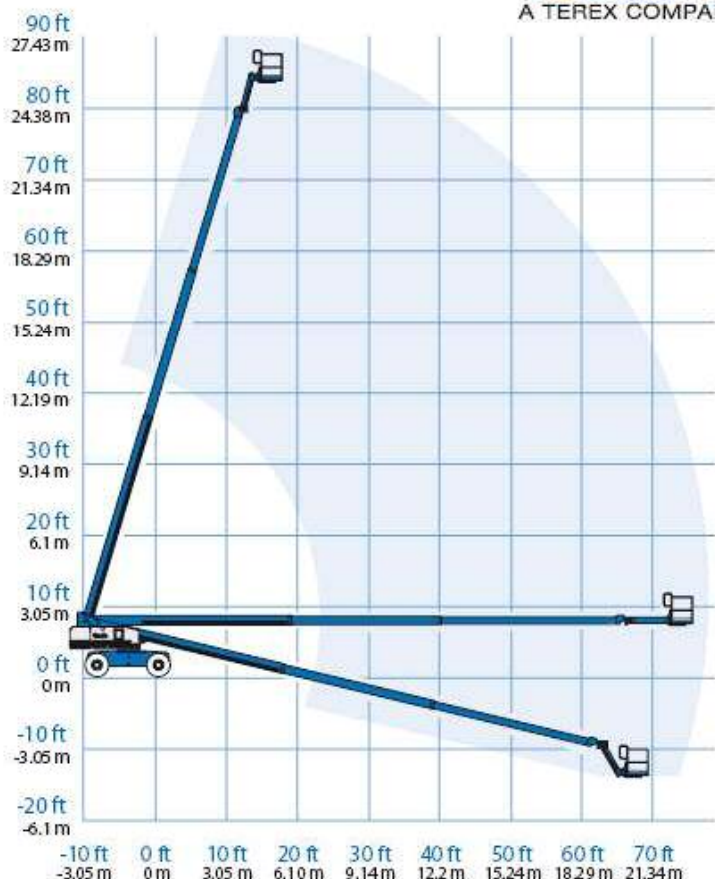
2WD	35,710 lbs	16,198 kg
4WD	35,860 lbs	16,266 kg

STANDARDS COMPLIANCE

ANSI A92.5, CSA B354.4, CE Compliance, AS 1418.10, PB-10-611-03

RANGE OF MOTION S-85™

Genie
A TEREX COMPANY



Southern Cranes & Access

WEST SUSSEX DEPOT
 TEL: 01798 875988
 FAX: 01798 875989
 sales@southerncranes.co.uk

Southern Contract Lifting

LONDON DEPOT
 TEL: 0208 683 1188
 FAX: 0208 683 1199
 southernlifting@tiscali.co.uk

WINTERFIELDS FARM, WIGGONHOLT, PULBOROUGH
 WEST SUSSEX RH20 2EJ
 www.southerncranes.co.uk