

**SOUTHERN** *CRANES & ACCESS*

**SOUTHERN** *CONTRACT LIFTING*

# MANITOU MT 1330SL

ROUGH TERRAIN  
FORKLIFT TRUCK  
WITH STABILISATION



**WEST SUSSEX DEPOT**

TEL: 01798 875988

FAX: 01798 875989

[sales@southerncranes.co.uk](mailto:sales@southerncranes.co.uk)

[www.southerncranes.co.uk](http://www.southerncranes.co.uk)

**LONDON DEPOT**

TEL: 0208 683 1188

FAX: 0208 683 1199

[southernlifting@tiscali.co.uk](mailto:southernlifting@tiscali.co.uk)

## MT 1330 SL

**Lifting Capacity -** 3000kg

at 500mm from forks heels.

- Tipping load at maximum reach: 1113kg
- Tear out force with toothed digging bucket to ISO 8313-1986 with tilting ram: 7000daN

**Lifting Height -** 13m

**Times:** unladen / loaded (in s)

- Lifting 11.8/12.3
- Lowering 8.4/7.9
- Simultaneous extension 1st and 2nd booms 17/17
- Simultaneous retraction 1st and 2nd booms 14/13.5
- Time unladen (in s)
- Crowd 4.75
- Dump 4.20

## Tyres

- 15,5/80 - 24 12 PR SGI

## Forks (mm)

- Length 1200
- Width x thickness 125 x 45
- Maximum distance between forks 1040
- Carriage rotation 124°

## Multidisc brakes - hydraulically on 4 wheels

## PERKINS Engine

- Type 1004.42/1004.4 Turbo
- Capacity 4 cylinders - 4233cm<sup>3</sup> / 3990cm<sup>3</sup>
- Power (ISO/TR 14396) 81.5HP / 76.5kw at 2200rpm Turbo 104HP / 76.5kw
- Maximum torque 290Nm at 1400rpm Turbo 349Nm at 1400rpm
- Direct Injection
- Water cooling

## Transmission - Torque convertor

- Electro-hydraulic reversing shift
- 4 speed forward and reverse
- Maximum travel speed 25km/h

## Hydraulics

- Lifting/tilting pump gear type 260bars / 166l/mn
- Flow divider with priority to steering and brakes

## Capacities

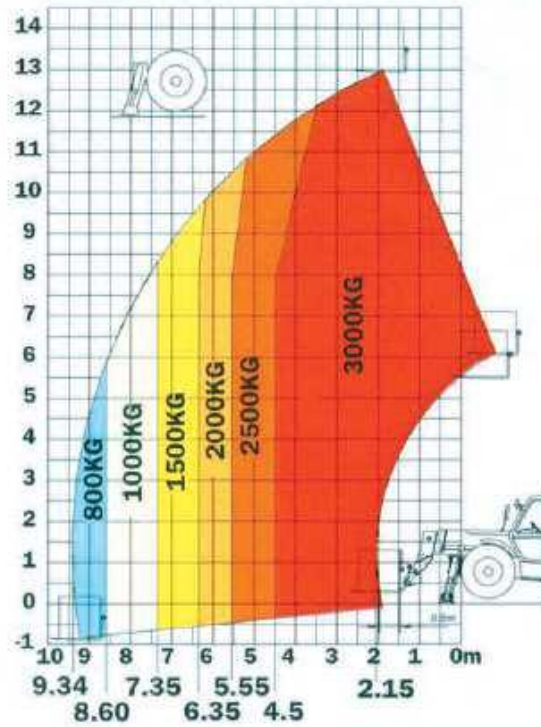
- Cooling system 24.5 l. (Turbo 26.5 l.)
- Engine oil 10.5 l. (Turbo 11.5 l.)
- Hydraulic oil 120 l.
- Transmission oil 16 l.
- Fuel tank 135 l.

## Measurements

- Weight unladen 9530kg
- Overall width 2.36m
- Overall width stabilisers extended 2.30m
- Overall height 2.55m
- Turning radius 4.00m
- Overall length 5.94m
- Ground clearance 0.45m
- Drawbar pull 7400 daN - Turbo 9200daN

## RANGE OF MOTION

Reach at maximum height 1.88m



A	1200
B	2770
C	2120
C1	2010
D	5940
D1	5830
D2	4460
E	7140
F	1970
F1	1970
G	450
G1	445
G2	450
G3	275
H	4°or7%
H1	4°or7%
I	1050
J	950
K	1040
L	45
N	1850
O	125
P2	45.5°
P3	40°
R	3640
S	8720
T	4665
U1	2550
U2	2710
V	5600
V1	1320
V2	4000
W	2360
W1	2304
W2	1172
W3	2020
Y	12°
Z	112°

mm

