

SOUTHERN CRANES & ACCESS

Genie S65



Southern Cranes & Access Ltd

Pollards Way, Southwater, Horsham, RH13 9AQ

Access hire: 01403 339105 . Crane hire: 01403 790874
sales@southerncranes.co.uk . www.southerncranes.co.uk

Cranes
Access
Transport
Contract Lifting
Training

Genie S65

Measurements

Working height maximum*	21.90 m
Platform height maximum	19.90 m
Horizontal reach maximum	16.80 m
A Platform length	
8 ft model	0.91 m
6 ft model	0.76 m
B Platform width	
8 ft model	2.44 m
6 ft model	1.83 m
C Height - stowed	2.72 m
D Length - stowed	9.42 m
Length - transport (jib tucked under)	7.60 m
E Width - with standard tyres	2.49 m
F Wheelbase	2.50 m
G Ground clearance - centre	0.37 m

Productivity

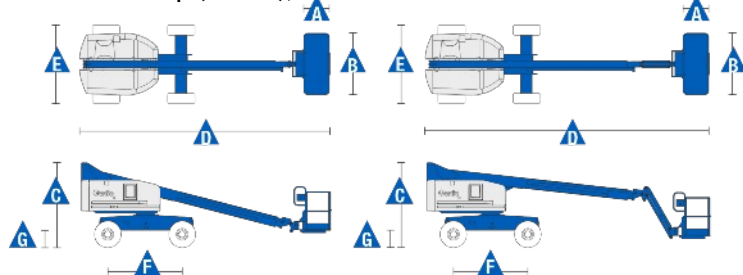
Lift capacity	227 kg
Platform rotation	160°
Vertical jib rotation	135° (+78° /-57°)
Turntable rotation	360° continuous
Turntable tailswing	1.19 m
Drive speed - 2WD stowed	7.2 km/h
Drive speed - 4WD stowed	5.6 km/h
Drive speed - raised or extended	1 km/h
Gradeability** stowed - 2WD	30%
Gradeability** stowed - 4WD	45%
Turning radius - inside	2.39 m
Turning radius - outside	5.66 m
Controls	12 V DC proportional
Tyres	15 - 19.5 NHS

Weight***

2WD (CE air tyres)	10,069 kg
--------------------	-----------

Power

Power source:
GM 3.0L 80hp (59kw), Duel Fuel



Deutz Diesel F3L 2011F 49hp (36kw)

Perkins Diesel 404-22 50hp (46kw)

Auxiliary power unit.....12 V DC

Hydraulic tank capacity.....170 l

Fuel tank capacity.....151 l

Sound & Vibration Levels

Sound pressure level

ground workstation.....83 dBA

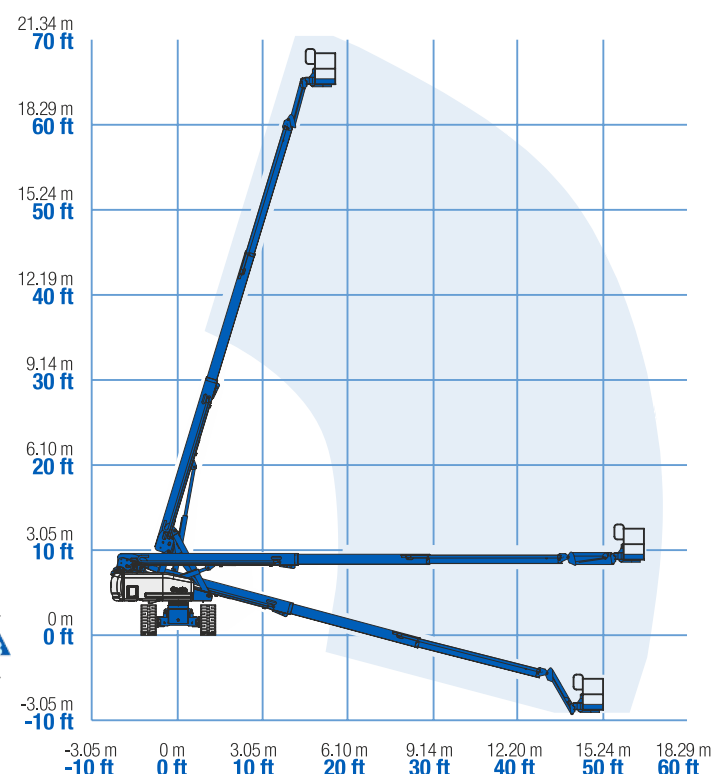
platform workstation.....79 dBA

Vibration.....<2.5 m/s²

* The metric equivalent of working height adds 2 m to platform height.

** Gradeability applies to driving on slopes, see operator's manual for details regarding slope ratings.

*** Weight will vary depending on options and/or country standards.



Southern Cranes & Access Ltd

Pollards Way, Southwater, Horsham, RH13 9AQ

Access hire: 01403 339105 . Crane hire: 01403 790874
sales@southerncranes.co.uk . www.southerncranes.co.uk

15 September 2016