

SOUTHERN CRANES & ACCESS

Genie S85



Southern Cranes & Access Ltd

Pollards Way, Southwater, Horsham, RH13 9AQ

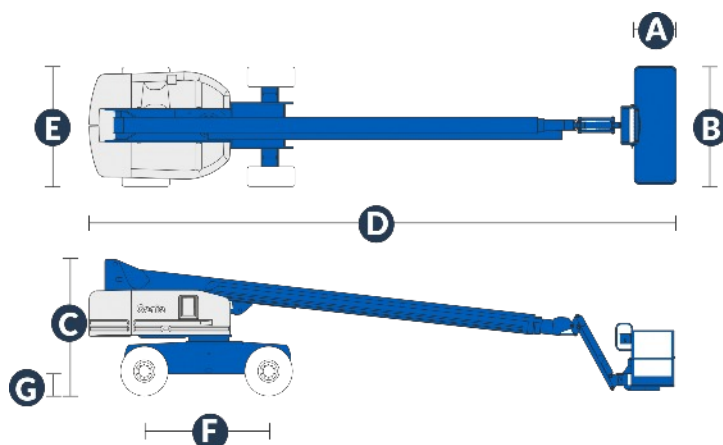
Access hire: 01403 339105 . Crane hire: 01403 790874
sales@southerncranes.co.uk . www.southerncranes.co.uk

Cranes
Access
Transport
Contract Lifting
Training

Genie S85

Measurements

Working height maximum*	27.90 m
Platform height maximum	25.90 m
Horizontal reach maximum	23.60 m
Below ground reach	4.19 m
A Platform length - 6 ft model	0.76 m
Platform length - 8 ft model	0.91 m
B Platform width - 6 ft model	1.83 m
Platform width - 8 ft model	2.44 m
C Height - stowed	2.80 m
D Length - stowed	12.37 m
Length - transport (jib tucked under)	10.67 m
E Width - axles retracted	2.44 m
Width - axles extended	3.07 m
F Wheelbase	2.74 m
G Ground clearance - centre	0.43 m



Productivity

Lift capacity - 6 ft platform	227 kg
Lift capacity - 8 ft platform	227 kg
Platform rotation	160°
Turntable rotation	360°
Turntable tail-swing - axle retracted	1.42 m
Turntable tail-swing - axle extended	1.12 m
Drive speed - stowed	5.6 km/h
Drive speed - raised/extended	1.1 km/h
Gradeability - 2WD - stowed**	30%
Gradeability - 4WD - stowed**	45%
Turning radius - axle extended: inside	3.25 m
Outside	7.01 m
Controls	12 V DC proportional
Tyres - RT lug	385/65 D22.5

Weight

2WD	16,198 kg
4WD	16,266 kg

Power source

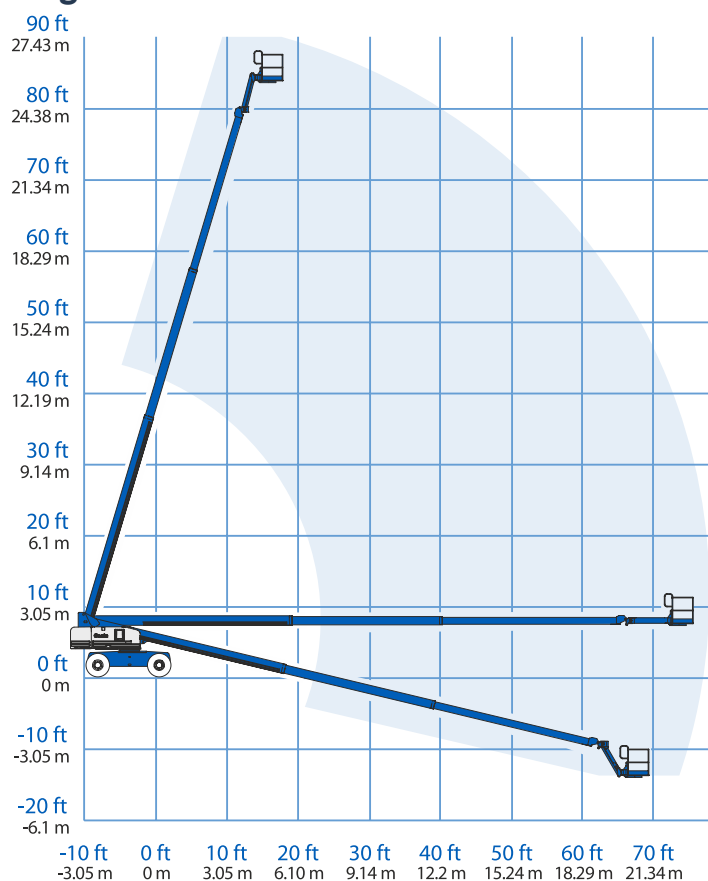
Deutz BF4L 2011 4 cylinder diesel	78 hp (58.1 kW)
Perkins 804C-33 4 cylinder diesel	63 hp (50 kW)
Auxiliary power unit	12 V DC
Hydraulic tank capacity	170 l
Fuel tank capacity	125 l

* The working height adds 2 m to platform height.

** Gradeability applies to driving on slopes. See operator's manual for details regarding slope ratings.

*** Weight will vary depending on options and/or country standards.

Range of motion



Southern Cranes & Access Ltd

Pollards Way, Southwater, Horsham, RH13 9AQ

Access hire: 01403 339105 . Crane hire: 01403 790874
sales@southerncranes.co.uk . www.southerncranes.co.uk

15 September 2016