

# *SOUTHERN CRANES & ACCESS*

## Genie Z-62/40



**Southern Cranes & Access Ltd**

Pollards Way, Southwater, Horsham, RH13 9AQ

Access hire: 01403 339105 . Crane hire: 01403 790874  
sales@southerncranes.co.uk . www.southerncranes.co.uk

Cranes  
Access  
Transport  
Contract Lifting  
Training

# Genie Z-62/40

## Specifications

MODEL	Z-62/40	
Measurements	US	Metric
Working height maximum*	67 ft 11 in	20.87 m
Platform height maximum	61 ft 11 in	18.87 m
Horizontal reach maximum	40 ft 5 in	12.42 m
Up and over clearance maximum	25 ft 7 in	7.8 m
<b>A</b> Platform length - 8 ft / 6 ft model	3 ft / 2 ft 6 in	0.91 m / 0.76 m
<b>B</b> Platform width - 8 ft / 6 ft model	8 ft / 6 ft	2.44 m / 1.83 m
<b>C</b> Height - stowed	8 ft 4 in	2.54 m
- stowed Trax	8 ft 6 in	2.59 m
- transport (jib tucked under)	9 ft 6 in	2.90 m
- transport Trax	9 ft 8 in	2.90 m
<b>D</b> Length - stowed	30 ft 3 in	9.25 m
- transport (jib tucked under)	24 ft 10.5 in	7.58 m
<b>E</b> Width	8 ft 2 in	2.49 m
<b>A</b> Wheelbase	8 ft 2 in	2.49 m
<b>A</b> Ground clearance - center	1 ft 3 in	41 cm
- Trax center	1 ft 5 in	43 cm

## Productivity

Lift capacity	500 lb	227 kg
Platform rotation	180°	
Vertical jib rotation	135°	
Turntable rotation	360° continuous	
Turntable tailswing	zero	
Drive speed - stowed	3.0 mph	4.8 km/h
Drive speed - raised**	0.68 mph	1.1 km/h
Gradeability - 2WD - stowed***	30%	30%
Gradeability - 4WD - stowed***	45%	45%
Turning radius - 2WS inside	9 ft 2 in	2.80 m
Turning radius - 2WS outside	18 ft 9 in	5.71 m
Turning radius - 4WS inside	4 ft 5 in	1.35 m
Turning radius - 4WS outside	11 ft 11 in	3.6 m
Controls	12V DC proportional	
Tires	355/55D 625	

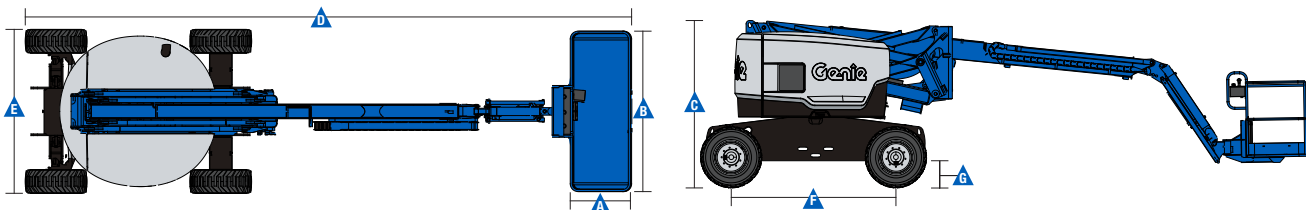
## Power

Power source	49 hp (36.54 kW) Deutz diesel T4f D2.9L4*****	
	49 hp (36.54 kW) Perkins diesel T4f 404D-22*****	
	74 hp (55.18 kW) Deutz diesel T4f TD2.9L4*****	
	60 hp (44.74 kW) Ford gas/LPG MSG425	
Auxiliary power unit	12V DC	
Hydraulic tank capacity	35 gal	132.5 L
Fuel tank capacity - diesel	36 gal	136.3 L
- gas	20 gal	75.7 L

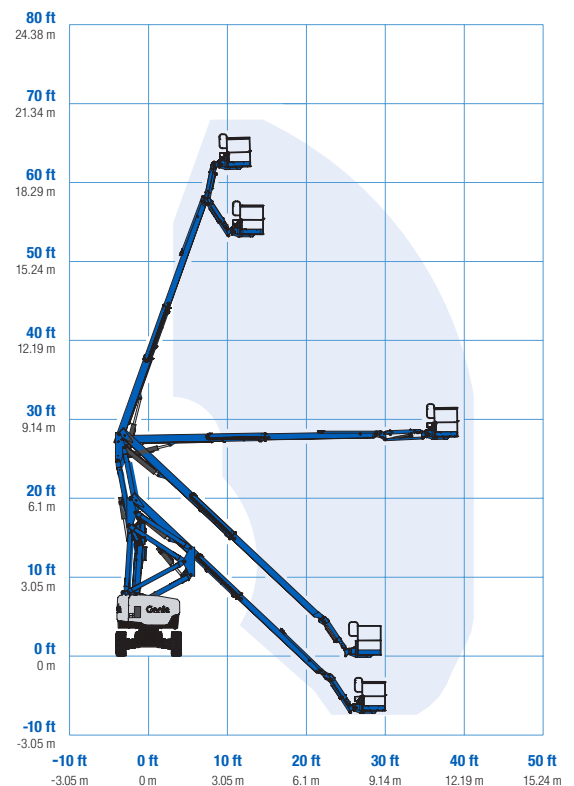
## Weight\*\*\*\*

2WS	22,160 lb	10,052 kg
4WS	22,665 lb	10,281 kg
Trax	--,--- lb	--,--- kg

Standards Compliance ANSI A92.5, CSA B354.4, EN 280, AS 1418.10



## Range Of Motion Z-62/40



\* The metric equivalent of working height adds 2 m to platform height. U.S. adds 6 ft to platform height.

\*\* In lift mode (platform raised), the machine is designed to operate on firm, level surfaces only.

\*\*\* Gradeability applies to driving on slopes. See operators manual for details regarding slope ratings.

\*\*\*\* Weight will vary depending on options and/or country standards.

\*\*\*\*\* Tier 4f engines available in US only.

**Southern Cranes & Access Ltd**

Pollards Way, Southwater, Horsham, RH13 9AQ

Access hire: 01403 339105 . Crane hire: 01403 790874  
 sales@southerncranes.co.uk . www.southerncranes.co.uk