

SOUTHERN CRANES & ACCESS

Genie Z80/60



Southern Cranes & Access Ltd

Pollards Way, Southwater, Horsham, RH13 9AQ

Access hire: 01403 339105 . Crane hire: 01403 790874
sales@southerncranes.co.uk . www.southerncranes.co.uk

Cranes
Access
Transport
Contract Lifting
Training

Genie Z80/60

Specifications

| Model | Z-80/60 | |
|---------------------------------|---------------|----------------|
| Measurements | Metric | US |
| Working height maximum* | 25.77 m | 84 ft |
| Platform height maximum | 23.77 m | 78 ft |
| Horizontal reach maximum | 18.29 m | 60 ft |
| Up and over clearance maximum | 8.83 m | 29 ft |
| Below ground reach | 4.83 m | 15 ft 10 in |
| ▲ Platform length - 8 ft / 6 ft | 0.91 m/0.76 m | 3 ft/2 ft 6 in |
| ▲ Platform width - 8 ft / 6 ft | 2.44 m/1.83 m | 8 ft/6 ft |
| ▲ Height - stowed | 3.00 m | 9 ft 10 in |
| ▲ Length - stowed | 11.27 m | 37 ft |
| ▲ Length - transport | 11.27 m | 37 ft |
| ▲ Width | 2.49 m | 8 ft 2 in |
| ▲ Wheelbase | 2.85 m | 9 ft 4 in |
| ▲ Ground clearance - center | 0.30 m | 12 in |

Productivity

| | | |
|----------------------------------|----------------------|------------|
| Lift capacity | 227 kg | 500 lbs |
| Platform rotation | 160° | 160° |
| Vertical jib rotation | 135° | 135° |
| Turntable rotation | 360° continuous | |
| Turntable tailswing - riser up | 1.17 m | 3 ft 10 in |
| Turntable tailswing - riser down | 2.24 m | 7 ft 4 in |
| Drive speed - stowed | 4.83 km/h | 3.0 mph |
| Drive speed - raised** | 1.1 km/h | 0.68 mph |
| Lift speed to full height | 88 sec | 88 sec |
| Gradeability - 2WD - stowed*** | 30% | 30% |
| Gradeability - 4WD - stowed*** | 45% | 45% |
| Turning radius - 2WS inside | 4.42 m | 14 ft 6 in |
| Turning radius - 2WS outside | 7.47 m | 24 ft 6 in |
| Turning radius - 4WS inside | 2.13 m | 7 ft |
| Turning radius - 4WS outside | 4.57 m | 15 ft |
| Controls | 12 V DC proportional | |
| Tyres | 18-625 NHS | |

Power

| | | |
|---------------------------------------|---|---------|
| Power source | Deutz TD 2011 L04i 4 cylinder diesel 74 hp (55 kW) Perkins 804D-33 4 cylinder diesel 63 hp (47 kW) | |
| Auxiliary power unit | 12 V DC | 12 V DC |
| Hydraulic tank capacity | 170 L | 45 gal |
| Fuel tank capacity – diesel machines | 132.5 L | 35 gal |
| Fuel tank capacity – gas/LPG machines | 113.6 L | 30 gal |

Sound & Vibration Levels

| | | |
|---|-----------------------|---------------------------|
| Sound pressure level (ground workstation) | 85 dBA | 85 dBA |
| Sound pressure level (platform workstation) | 74 dBA | 74 dBA |
| Vibration | <2.5 m/s ² | <8 ft 2 in/s ² |

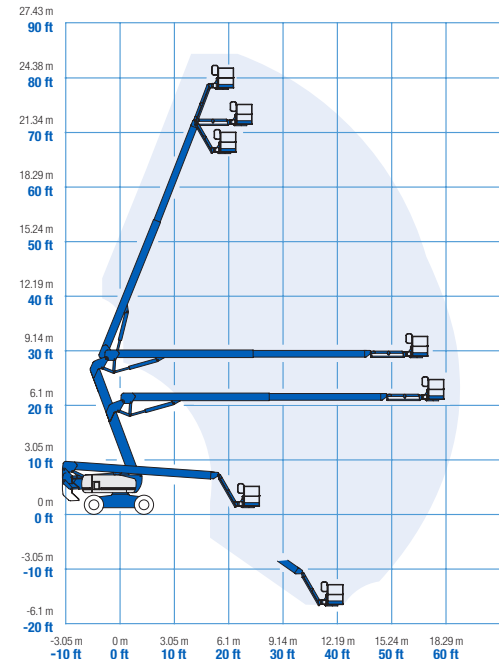
Weight****

| | | |
|------------|-----------|------------|
| CE 4WD/2WS | 16,284 kg | 35,900 lbs |
| CE 4WD/4WS | 17,010 kg | 37,500 lbs |

Standards Compliance

EU Directives: 2006/42/EC - Machinery (harmonized standard EN280:2001+A2:2009); 2004/108/EC (EMC); 2000/14/EC (Outdoor Noise)

Range Of Motion Z-80/60

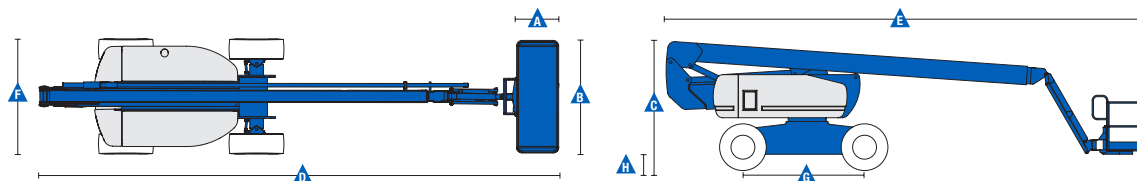


* The metric equivalent of working height adds 2 m to platform height. U.S. adds 6 ft to platform height.

** In lift mode (platform raised), the machine is designed to operate on firm, level surfaces only.

*** Gradeability applies to driving on slopes. See operator's manual for details regarding slope ratings.

**** Weight will vary depending on options and/or country standards.



www.genielift.co.uk www.genielift.me

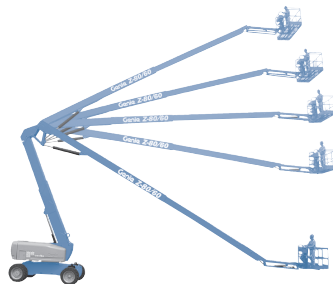
02/14 Part No. B109365UK

SOUTHERN CRANES & ACCESS

Genie Z80/60

Features

| Standard Features | Easily Configured To Meet Your Needs | Options & Accessories |
|---|--|---|
| <p>Measurements</p> <ul style="list-style-type: none">• 25.77 m (84 ft) working height• 18.29 m (60 ft) horizontal reach• 8.83 m (29 ft) up and over clearance• Up to 227 kg (500 lbs) lift capacity <p>Productivity</p> <ul style="list-style-type: none">• 1.83 m (6 ft) jib with 135° range• Self-levelling platform• Hydraulic platform rotation• Proportional joystick controls• Thumb rocker steering• On board diagnostics• Hydraulic oil cooler• Drive enable• AC power cord to platform• Horn• Hour meter• Tilt alarm• Descent & travel alarms• Flashing beacon• 360° continuous turntable rotation• Locking turntable covers• Full-time positive traction drive• Two speed wheel motors• Four steering modes: front, rear, crab and coordinated• Configurable controls to limit lift height to 70 ft• Certified load sensor <p>Power</p> <ul style="list-style-type: none">• 12 V DC auxiliary power• Anti-restart engine protection• Auto engine fault shutdown• Engine monitoring display• Dual battery• Engine status display | <p>Platform Options</p> <ul style="list-style-type: none">• Steel 2.44 m (8 ft) (standard)• Steel 1.83 m (6 ft)• 2.44 m (8 ft) tri-entry <p>Jib</p> <ul style="list-style-type: none">• Articulating 1.83 m (6 ft) jib boom <p>Engine Options</p> <ul style="list-style-type: none">• Deutz diesel 55 kW (74 hp)• Perkins diesel 47 kW (63 hp) <p>Drive/Steer Options</p> <ul style="list-style-type: none">• 4 x 4 (standard)• 4 x 4 x 2 (standard)• 4 x 4 x 4 <p>Axle</p> <ul style="list-style-type: none">• Active oscillation <p>Tyre Options</p> <ul style="list-style-type: none">• Rough terrain foam-filled (standard)• Rough terrain non-marking foam-filled | <p>Productivity Options</p> <ul style="list-style-type: none">• Platform top auxiliary rail• Weld leads to platform ⁽²⁾• Air line to platform• Power to platform (incl. plug, socket and ground fault interrupt leakage on request)• Work lights package (2 on chassis, 2 on platform)• Dual axis joystick steering• Biodegradable hydraulic oil ⁽²⁾• Aircraft protection kit ^(1,2): platform foam padding and platform disable system• Hostile environment kit ⁽²⁾: cylinder bellows, boom wiper seals, platform and ground control box covers• Deluxe hostile environment kit ^(1,2): adds to basic kit center turntable shield, ring gear guard, tail pipe guard, engine cover flaps and air pre-cleaner)• Track & Trace ⁽³⁾ (GPS unit providing machine location & operating information)• Lockable platform control box covers• Tool tray• Operator Protective Structure• Operator Protective Alarm <p>Power Options</p> <ul style="list-style-type: none">• AC generator packages (110V/60Hz - 220V/50Hz, 3000W) ⁽²⁾• Hydraulic MTE Generator kit (110V/120V-220V/240V)• Deutz V-Belt Generator kit (110V/120V) ⁽¹⁾• Diesel air intake pre-cleaner ⁽²⁾• Diesel catalytic scrubber muffler ⁽²⁾• Low temperature cut-out module• Engine heater option ⁽¹⁾• Refinery kit with spark arrestor and electric or mechanical Chalyvyn valve ⁽¹⁾ |



⁽¹⁾ Available on selected models only. See your Genie representative for further information.

⁽²⁾ Factory-fit option only

⁽³⁾ Includes a first 2 years subscription

Southern Cranes & Access Ltd

Pollards Way, Southwater, Horsham, RH13 9AQ

Access hire: 01403 339105 . Crane hire: 01403 790874
sales@southerncranes.co.uk . www.southerncranes.co.uk