

# *SOUTHERN CRANES & ACCESS*

## Manitou MT1440



**Southern Cranes & Access Ltd**

Pollards Way, Southwater, Horsham, RH13 9AQ

Access hire: 01403 339105 . Crane hire: 01403 790874  
sales@southerncranes.co.uk . www.southerncranes.co.uk

Cranes  
Access  
Transport  
Contract Lifting  
Training

# Manitou MT1440

## Capacities

Lift Capacity.....	4,000 kg
Lift Height.....	13.53 m
Maximum Reach.....	9.46 m

## Unladen times

Lifting.....	15.5 sec
Lowering.....	11.6 sec
Extension.....	16.5 sec
Retraction.....	11.9 sec
Crowd.....	4 sec
Dump.....	4 sec

## Engine and transmission

Fuel.....	Diesel
Engine.....	Perkins Stage 3A
Engine Power.....	4.5 KW
Transmission.....	torque converter
Drive.....	4 wheel drive
Number of gears.....	4 forward, 4 reverse
Travel Speed.....	25 km/h
Steering mode.....	all-wheel steer, 3 modes

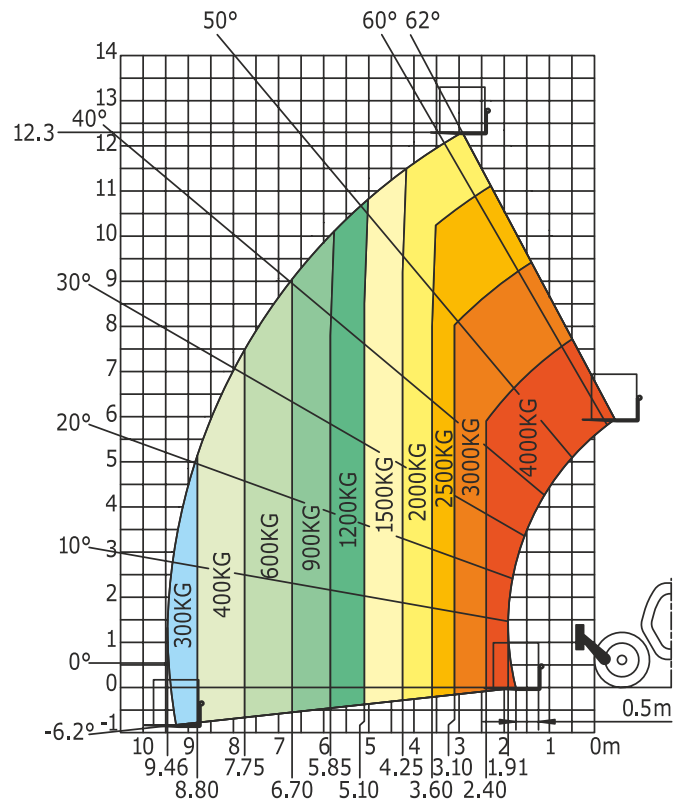


## Dimensions

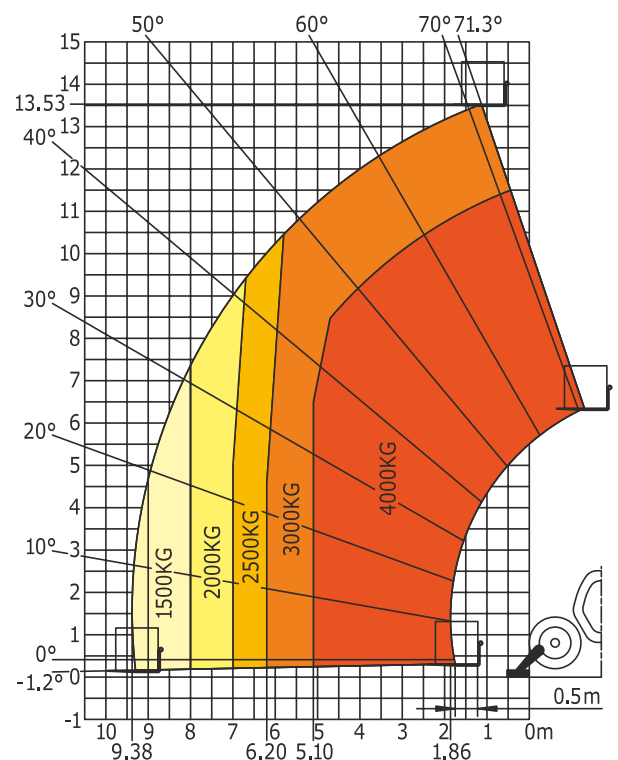
Length.....	6.13 m
Width.....	2.37 m
Height.....	2.45 m
Weight.....	10,900 kg
Turning Radius.....	3.97 m
Ground Clearance.....	0.37 m

The new telescopic forklifts from Manitou represent a complete revolution in methods of lifting. These machines offer high performance lifting and loading capability. These fork-lifts are your allies in your quest for productivity and simplicity. The performance and manoeuvrability of these new telescopic fork-lift trucks let you carry out all your building and renovation tasks quickly and in complete safety.

## Machine on tyres with forks



## Machine on stabilizers with forks



**Southern Cranes & Access Ltd**

Pollards Way, Southwater, Horsham, RH13 9AQ

Access hire: 01403 339105 . Crane hire: 01403 790874  
[sales@southerncranes.co.uk](mailto:sales@southerncranes.co.uk) . [www.southerncranes.co.uk](http://www.southerncranes.co.uk)

22 September 2016