

SOUTHERN CRANES & ACCESS

Genie Z-62/40



Southern Cranes & Access Ltd

Pollards Way, Southwater, Horsham, RH13 9AQ

Access hire: 01403 339105 . Crane hire: 01403 790874
sales@southerncranes.co.uk . www.southerncranes.co.uk

Cranes
Access
Transport
Contract Lifting
Training

Genie Z-62/40



Self-Propelled Articulating Booms Z™ -62/40

Specifications

MODEL	Z-62/40	
Measurements	US	Metric
Working height maximum*	67 ft 11 in	20.87 m
Platform height maximum	61 ft 11 in	18.87 m
Horizontal reach maximum	40 ft 5 in	12.42 m
Up and over clearance maximum	25 ft 7 in	7.8 m
▲ Platform length - 8 ft / 6 ft model	3 ft / 2 ft 6 in	0.91 m / 0.76 m
▲ Platform width - 8 ft / 6 ft model	8 ft / 6 ft	2.44 m / 1.83 m
▲ Height - stowed	8 ft 4 in	2.54 m
- stowed Trax	8 ft 6 in	2.59 m
- transport (jib tucked under)	9 ft 6 in	2.90 m
- transport Trax	9 ft 8 in	2.90 m
▲ Length - stowed	30 ft 3 in	9.25 m
- transport (jib tucked under)	24 ft 10.5 in	7.58 m
▲ Width	8 ft 2 in	2.49 m
▲ Wheelbase	8 ft 2 in	2.49 m
▲ Ground clearance - center	1 ft 3 in	41 cm
- Trax center	1 ft 5 in	43 cm

Productivity

Lift capacity	500 lb	227 kg
Platform rotation	180°	
Vertical jib rotation	135°	
Turntable rotation	360° continuous	
Turntable tailswing	zero	
Drive speed - stowed	3.0 mph	4.8 km/h
Drive speed - raised**	0.68 mph	1.1 km/h
Gradeability - 2WD - stowed***	30%	30%
Gradeability - 4WD - stowed***	45%	45%
Turning radius - 2WS inside	9 ft 2 in	2.80 m
Turning radius - 2WS outside	18 ft 9 in	5.71 m
Turning radius - 4WS inside	4 ft 5 in	1.35 m
Turning radius - 4WS outside	11 ft 11 in	3.6 m
Controls	12V DC proportional	
Tires	355/55D 625	

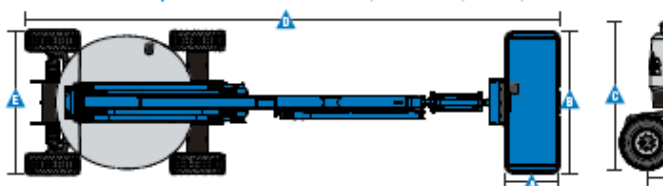
Power

Power source	49 hp (36.54 kW) Deutz diesel T4f D2.9L4****	
	49 hp (36.54 kW) Perkins diesel T4f 404D-22****	
	74 hp (55.18 kW) Deutz diesel T4f TD2.9L4****	
	60 hp (44.74 kW) Ford gas/LPG MSG425	
Auxiliary power unit	12V DC	
Hydraulic tank capacity	35 gal	132.5 L
Fuel tank capacity - diesel	36 gal	136.3 L
- gas	20 gal	75.7 L

Weight****

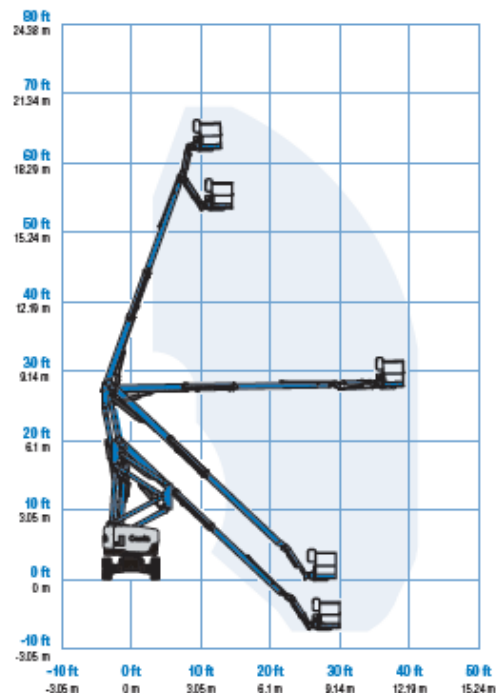
2WS	22,160 lb	10,052 kg
4WS	22,665 lb	10,281 kg
Trax	-- -- lb	-- -- kg

Standards Compliance



www.genielift.com

Range Of Motion Z-62/40



* The metric equivalent of working height adds 2 m to platform height. U.S. adds 6 ft to platform height.
 ** In lift mode (platform raised), the machine is designed to operate on firm, level surfaces only.
 *** Gradeability applies to driving on slopes. See operators manual for details regarding slope ratings.
 **** Weight will vary depending on options and/or country standards.
 ***** Tier 4f engines available in US only.

Southern Cranes & Access Ltd

Pollards Way, Southwater, Horsham, RH13 9AQ

Access hire: 01403 339105 . Crane hire: 01403 790874
 sales@southerncranes.co.uk . www.southerncranes.co.uk